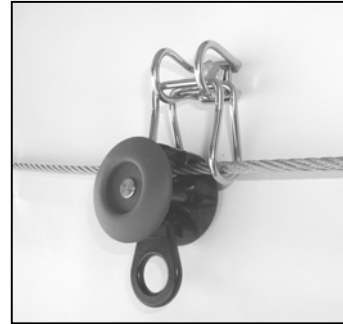


Sellstrom/RTC[®] SkyPass[™] System Installation Procedure

Instruction: INST-SPINSTALL
Effective: 3/2003
Expiration: 3/2013

These instructions explain the installation of the SkyPass[™] horizontal lifeline system. These instructions are intended for use only by employees of Sellstrom/RTC and/or approved SkyPass[™] installers.



1.0 Tools Needed

Anti-Tamper Wire
Wire Cutter
Crimping pliers for anti tamper wires
Cable cutter
5/16" Hand Swaging Tool – Sellstrom/RTC P/N 9500-HST
2 qty. 5/16" Aluminum Ferrules – Sellstrom/RTC P/N 9500-A005012R
SkyPass[™] components, including at least one tension indicator

2.0 Installation

- 2.1 Do not expose yourself to a fall hazard. Plan ahead and use appropriate fall protection while installing. A temporary fall protection system may be needed.
- 2.2 Lay out all the components for the system. Make sure that all components are present.
- 2.3 Install the end and intermediate anchorages, including the end with the swaged end of the wire rope.
- 2.4 Thread the cable through the intermediate anchorages. Two people make this job easier.
- 2.5 Inspect the cable for kinks or other damage as you feed it through the rest of the intermediate components.
- 2.6 Pull the cable tight after passing through all corner components and intermediate anchors.
- 2.7 Slide the end of the cable through one side of two 5/16" aluminum ferrules, around the termination point of the end component, and then back through the other side of the aluminum ferrules. See Figure One.
- 2.8 Assure that the cable has completely passed through the ferrules by leaving at least 1 inch of the cable protruding back through the end of the last ferrule.
- 2.9 Place the center of the first ferrule in the groove of the hand swager, and completely compress until completely closed. Perform 4 more additional compressions, 2 on each side of the center compression.
- 2.10 Repeat Step 2.9 on the second ferrule. See Figure Two.

WARNING!: There must be a total of 5 complete compressions performed on each aluminum ferrule!

Sellstrom Manufacturing Co.
One Sellstrom Drive
Palatine, IL 60067
Phone 800.323.7402
Fax 847.358.8564

Sellstrom/RTC[®] SkyPass[™] System Installation Procedure

2.0 Installation (cont.)



Figure One – End Loop

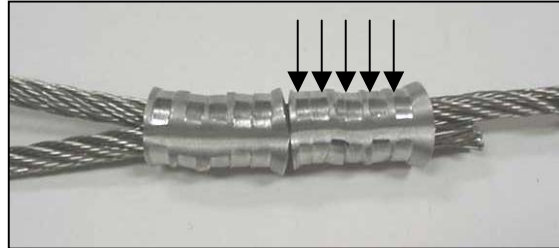


Figure Two – Five Swages per Ferrule

2.11 Tension cable so that the red section of the tension indicator is just visible (1/16" exposed.) Tension indication is available on the following SkyPass components and the required tension is listed in the SkyPass[™] HLL worksheet:

<u>P/N</u>	<u>Description</u>
SP019100	Energy Absorber with Pretensioner – 50 DaN
SP019300	Energy Absorber with Pretensioner – 100 DaN
SP059100	Pretensioner – 50 DaN
SP059300	Pretensioner – 100 DaN

WARNING! DO NOT over-tension the lifeline! Tension lifeline so that 1/16" of the red indicator is visible!

2.12 Attach anti-tamper wire through turnbuckle and seal with lead disc.

2.13 Install label where convenient for user to see when connecting to lifeline.

2.14 Inspect the system. If satisfactory, the temporary fall protection may be removed.

2.15 Clean the work area.

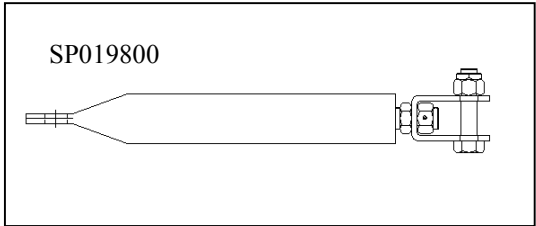
2.16 Perform a training session for the users.

2.17 Give all documentation to the customer.

Sellstrom Manufacturing Co.
One Sellstrom Drive
Palatine, IL 60067
Phone 800.323.7402
Fax 847.358.8564

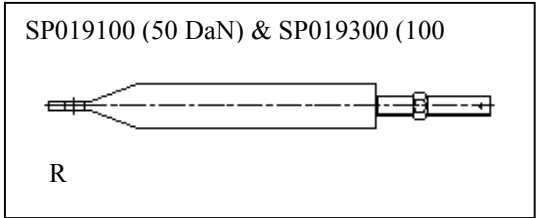
Sellstrom/RTC[®] SkyPass™ System Installation Procedure

3.0 System Components:



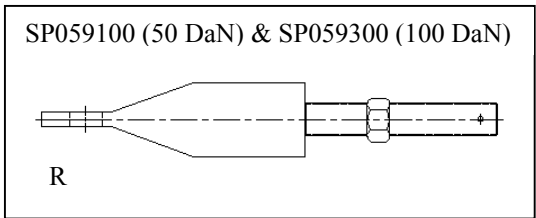
Energy Absorber without Pretensioner

- Used when energy absorber is needed without tensioning option.



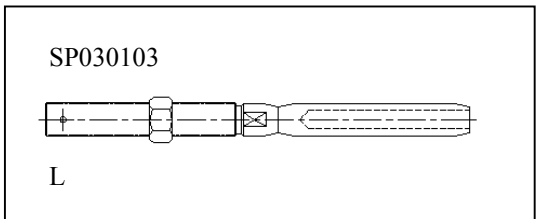
Energy Absorber with Pretensioner

- Used when energy absorber is needed as well as ability to tension system.
- 50 DaN and 100DaN tensioning available.



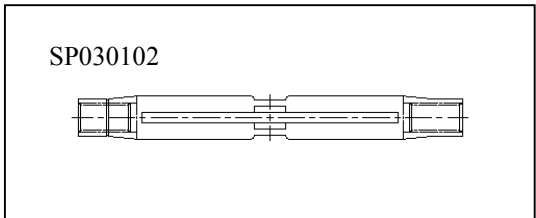
Pretensioner

- Used with turnbuckle to indicate when proper tension is reached.
- 50 DaN and 100DaN tensioning available.



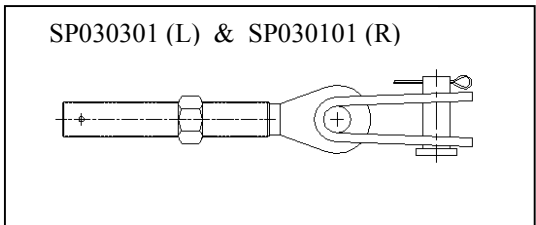
Nozzle to Set

- Swaged to lifeline to provide end support
- Screws into turnbuckle body



Turnbuckle Body

- Provides tensioning to the lifeline



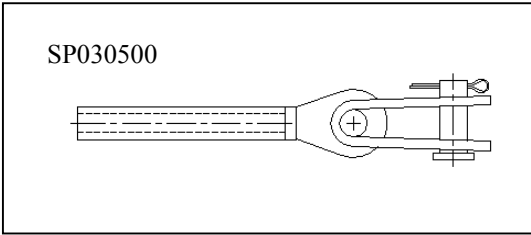
Threaded Nozzle

- Screws into turnbuckle body
- Available in left or right threaded end.

Sellstrom Manufacturing Co.
One Sellstrom Drive
Palatine, IL 60067
Phone 800.323.7402
Fax 847.358.8564

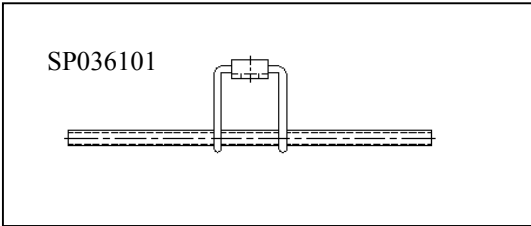
Sellstrom/RTC[®] SkyPass[™] System Installation Procedure

3.0 System Components (cont.) :



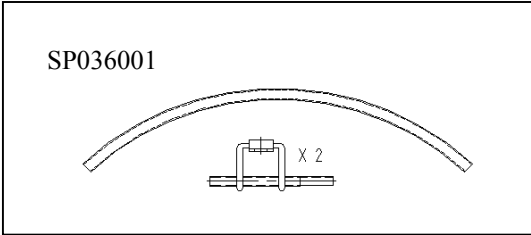
Nozzle to Set with Pin

- Swaged to lifeline to provide end support
- Attaches to other end components when tensioning is not required.



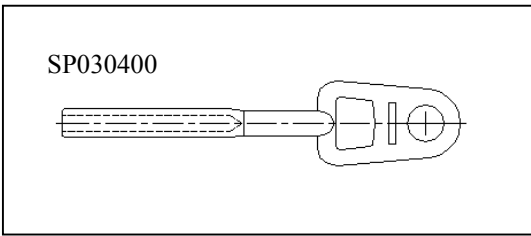
Simple Corner

- Accommodates intermediate support with angles from 3 degrees to 45 degrees
- Can be bent by hand to accommodate angles



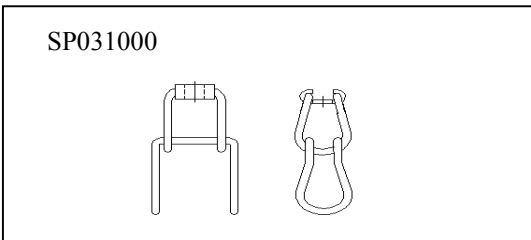
Double Corner

- Accommodates intermediate support
- Enables lifeline to be angled 90 degrees



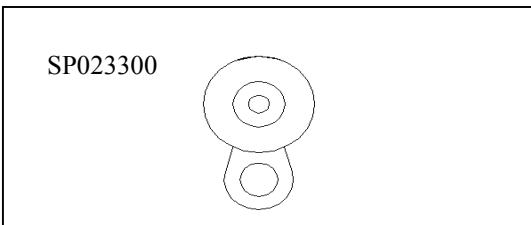
Entry / Exit Component

- Swaged to lifeline to provide end support
- Enables carriage to enter and exit the system



Intermediate Anchor

- Provides intermediate support to lifeline
- Carriage passes through without disconnecting



SkyPass Carriage

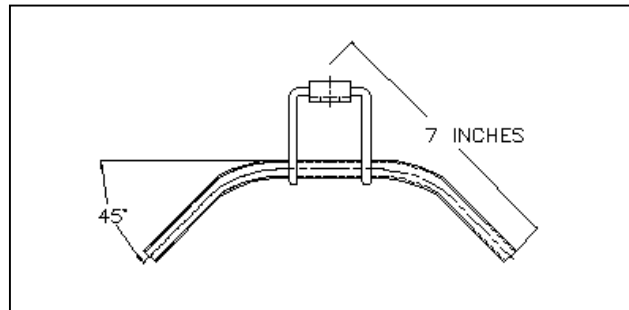
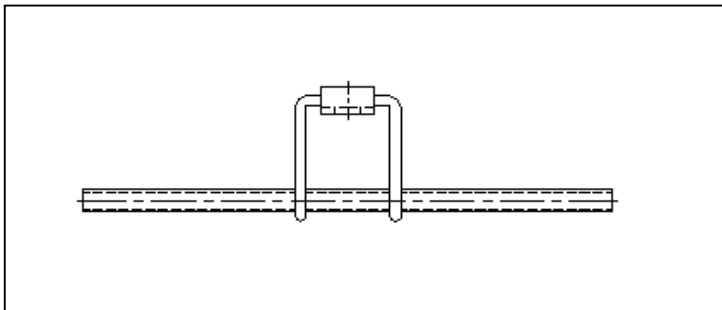
- Mobile anchor point along the lifeline
- Bypasses intermediate anchors and corners

Sellstrom Manufacturing Co.
One Sellstrom Drive
Palatine, IL 60067
Phone 800.323.7402
Fax 847.358.8564

Sellstrom/RTC[®] SkyPass[™] System Installation Procedure

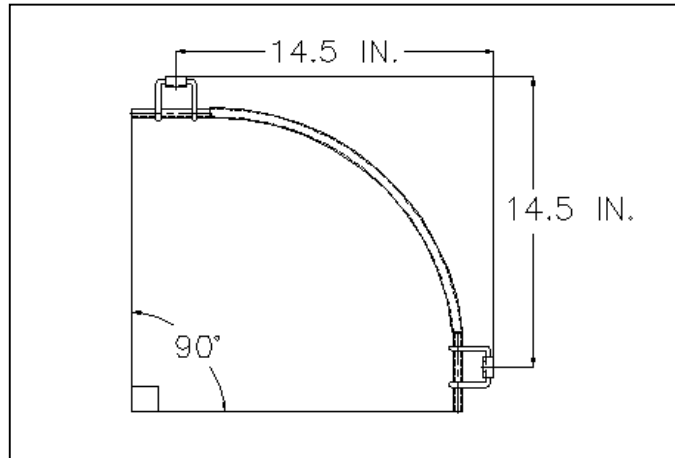
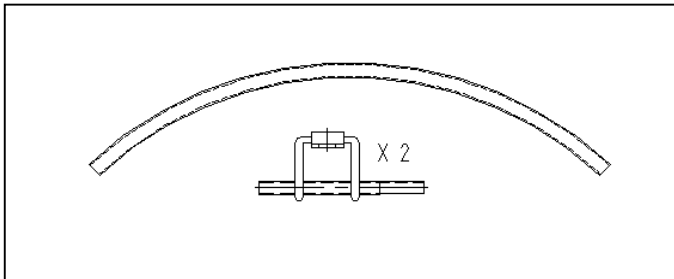
4.0 Corner Component Description:

Simple Corner – SP036101



The Simple Corner can be used when a slight deflection of the lifeline is needed. Each end can be bent by hand up to 45 degrees to accommodate angles up to a maximum of 90 degrees overall. The Simple Corner is also designed to be used in place of an intermediate support, to give the user more flexibility when designing the system. It can be used for inside or outside corners and is manufactured with 316L grade stainless steel.

Double Corner – SP036001



The Double Corner is typically used for 90 degree corners and curved surfaces. When assembled, the three components will accommodate an angle of 90 degrees. The Double Corner can be used for either inside or outside corners, and is manufactured with 316L grade stainless steel.

Sellstrom Manufacturing Co.
One Sellstrom Drive
Palatine, IL 60067
Phone 800.323.7402
Fax 847.358.8564