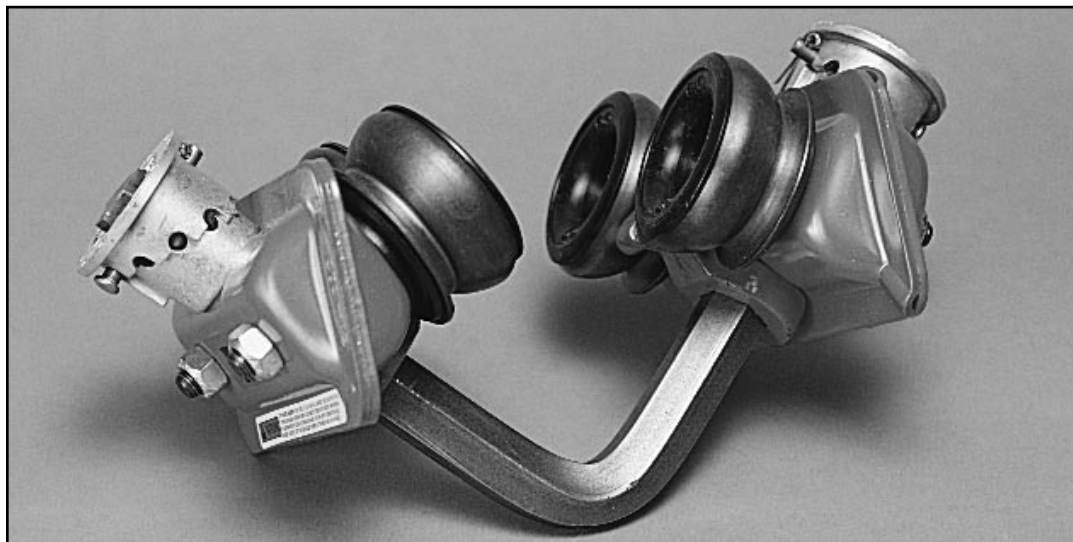


9900 Series I-Beam Trolley

Installation, Operating & Maintenance Instructions

Features & Attributes

- Personal rating of 350 lbs.
- 9900-TROLLEY2: Adjusts for standard beam flange with 2 5/8 thru 5 1/16 inches
9900-TROLLEY4: Adjusts for standard beam flange with 5 1/16 thru 7 1/2 inches
- 9900-TROLLEY2: Weighs only 12 lbs.
9900-TROLLEY4: Weighs only 15 lbs.
- Material is high quality rolled steel
- Double row, ball bearing design



WARNINGS



**To the Receiver,
Contractor, Store
Manager, Safety
Director, Supervisor,
Buyer, or anyone except
the ultimate equipment
users:**

Under Penalty of Law

These instructions are not to be removed except by the user of this equipment. Current instructions must always be available to any potential user. Note: Because of continuous developments in the application and use of SM/RTC equipment and our desire to serve your best interests, these instructions are invalid five years from the date of purchase or four years after the effective date on these instructions (whichever comes first). If you purchase a product, and these instructions are out of date, call SM/RTC customer service and request current instructions. Dial toll free (800)323-7402 (U.S. and Canada) or (847)358-2000.

If you have difficulty or experience any problem with SM/RTC equipment or the instructions, call the above toll-free number or (847)358-2000 immediately and ask the customer service department for assistance.

It is the responsibility of the user's management to review these instructions periodically, and to ensure compliance with every requirement to maintain the system's designed integrity. The equipment purchased is designed to be used as a part of a complete fall protection system and is to be inspected and maintained regularly.

WARNINGS Continued...

9900 Series I-Beam Trolley

Installation, Operating & Maintenance Instructions

WARNINGS



To the Equipment user:

You must read and fully understand or have the following instructions explained to you before using this equipment, Failure to do so could result in serious or fatal injury

Atencion:

Si usted no puede leer el ingles o si usted no comprende estas instrucciones, favor de consultar su director de seguridad o su supervisor.

Attention:

Si vous ne pouvez pas lire l'anglais ou si vous ne comprenez pas les instructions, consultez votre directeur de securite ou votre superviseur.

Achtung:

Wenn Sie nicht Englisch lesen können und diese Anweisungen nicht verstehen, dann fragen Sie bitte Ihren Sicherheitsdirektor oder Ihren Aufselher.

Attenzione:

Se non leggiere l'inglese o non capite queste istruzioni, per favore rivolgete Vi al Vostro Direttore, responsabile della "Sicurezza sul Lavoro" o al Vostro diretto superiore.

You assume complete liability if you fail to follow these instructions and are injured. Your Worker's Compensation Benefits may be reduced because of your failure to use safety devices correctly.

A "NO" answer to any question in the Safety Checklist on the back page of these instructions, either before or during product use, is an unsafe use of this equipment. Use this equipment only as instructed.

No fall arrest system can guarantee that you will not sustain injuries if a fall occurs. The most you can expect is that injuries will be substantially reduced. What you can be sure of is that improper use of this equipment will vastly increase your chances of serious injury or death because misuse builds false security; with misuse, you will think you have protection, but you may not. To achieve the maximum level of safety that this equipment can provide, follow all the product instructions contained in this booklet. Careful planning of your work methods and applications is part of these instructions.

Warning: Only SM/RTC equipment should be used as part of a complete SM/RTC fall protec-

tion or emergency rescue system. If the buyer or user chooses to disregard this warning, he is solely responsible for the safety of the entire system and all users.

It is not unusual for lanyards, lifelines, deceleration devices, and harnesses to become misplaced or rendered unusable at different times. Before replacing or adding components to a fall protection or emergency escape system, consult the original manufacturer. Federal OSHA (U.S.) regulations require the employer and employee to recognize that different manufacturers' equipment is not interchangeable unless test certificates of compatibility are known to be available. Federal OSHA further states that any unauthorized substitution or change to a system by the buyer should be fully evaluated or tested by a qualified person before the new system is put into use (see OSHA 1926.500). You the user, should ask your supervisor to see these test results.

9900 Series I-Beam Trolley

Installation, Operating & Maintenance Instructions

Installation & Operation Warnings:

Warning



No other applications or methods of use are allowed without prior written approval from an officer of SM/RTC.

These instructions are for both the equipment user and the user's management. Each should read and understand these instructions fully before using this equipment. Failure to do so could result in serious injury or death.

Improper installation and/or operation can result in the trolley coming off beam.

To Avoid Bodily Injury and Property Damage:

- Install trolley as directed herein.
- Do not overload.
- Do not side load.
- Do make certain end stops restrain trolley.

General:

Remove the 9900-Series Trolley from the shipping carton and inspect the various parts for damage which may have been caused during shipping or handling. All Trolleys are shipped with two side frame/wheel assemblies, one load bar, two adjusting collars, two clevis pins and two cotter pins.

9900 Series I-Beam Trolley

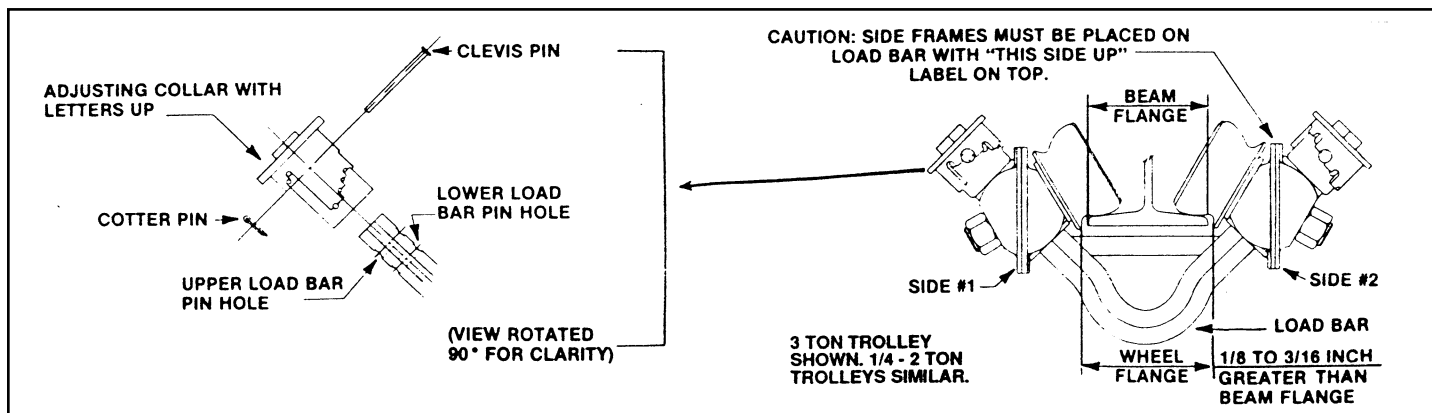
Installation, Operating & Maintenance Instructions

Adjustment:

9900-Series Trolleys can be adjusted for operation on a wide range of beam flange widths by using combinations of the holes in the adjusting collar and load bar. To determine the proper combination, measure the flange width of the beam on which the trolley is to be installed. Then using the chart, locate the nearest flange width and determine the load bar pin hole and the hole in the adjusting collar to be used. The

letters in the chart refer to the holes in the side of the adjusting collar that are directly below the letters cast in the top flange.

Note: The adjustment chart should only be used as a guide. Due to beam variations, a final collar adjustment may be necessary to obtain the required 1/8 to 3/16 inch wheel flange to beam flange clearance.



Installation:

1. Position trolley side #1 frame assembly on the load bar with "this side up" label on top. Insert the clevis pin through the proper hole of the adjusting collar and load bar as indicated in the figure below. Insert cotter pin through hole in tip of clevis pin and spread cotter pin to secure.
2. Place side #1 frame/load bar assembly on the beam and then slide the other side #2 frame assembly (with "this side up" label on top) onto the load bar. Position the remaining adjusting collar with the proper hole in the load bar and insert the remaining cotter pin through the hole in the tip of clevis pin and spread cotter pin to secure.
3. Due to variations in beam flange widths, measure to be sure that the distance between the trackwheel flanges is 1/8 to 3/16 inch (3 to 5 mm.) greater than the beam flange width. Adjust collars up or down if required. Adjusting collars must be set to the same letter or differ only by one letter in order to keep the hoist hook centered under the beam.

4. Check trolley for smooth operation on beam and for positive retention by trolley stops, if used.

Warning



SM/RTC 9900-Series Trolley may have a different wheel profile than the trolley being replaced.

To avoid injury:

Make certain end stops restrain the SM/RTC 9900-Series Trolley. Adjust or replace end stops, if necessary.

9900 Series I-Beam Trolley

Installation, Operating & Maintenance Instructions

Operation:

1. Observe working load of 310 lb. Do not overload.
2. Work directly under trolley at all times. Avoid dangerous swing fall hazards.
3. Read the instructions contained on this sheet as well as the instructions provided with the fall protection device used with this trolley.

Warning



Trolley May Fall From Beam if Improperly Operated.

To Avoid Injury:

- Do not overload
- Do not side load

9900-TROLLEY2

INCHES	2-1/2	2-21/32	2-23/32	2-15/16	3-1/16	3-7/32	3-11/32	3-1/2	3-5/8	3-29/32	4-3/32	4-7/32	4-11/32	4-1/2	4-5/8	4-25/32	4-15/16	5-1/32
MM	64	67	69	75	76	82	85	89	92	99	104	107	110	114	117	121	125	128
	← USE LOWER BAR PIN HOLE →									← USE UPPER LOAD BAR PIN HOLE →								
SIDE #1	A	A	B	B	C	C	D	D	E	A	A	B	B	C	C	D	D	E
SIDE #2	A	B	B	C	C	D	D	E	E	A	B	B	C	C	D	D	E	E

9900-TROLLEY4

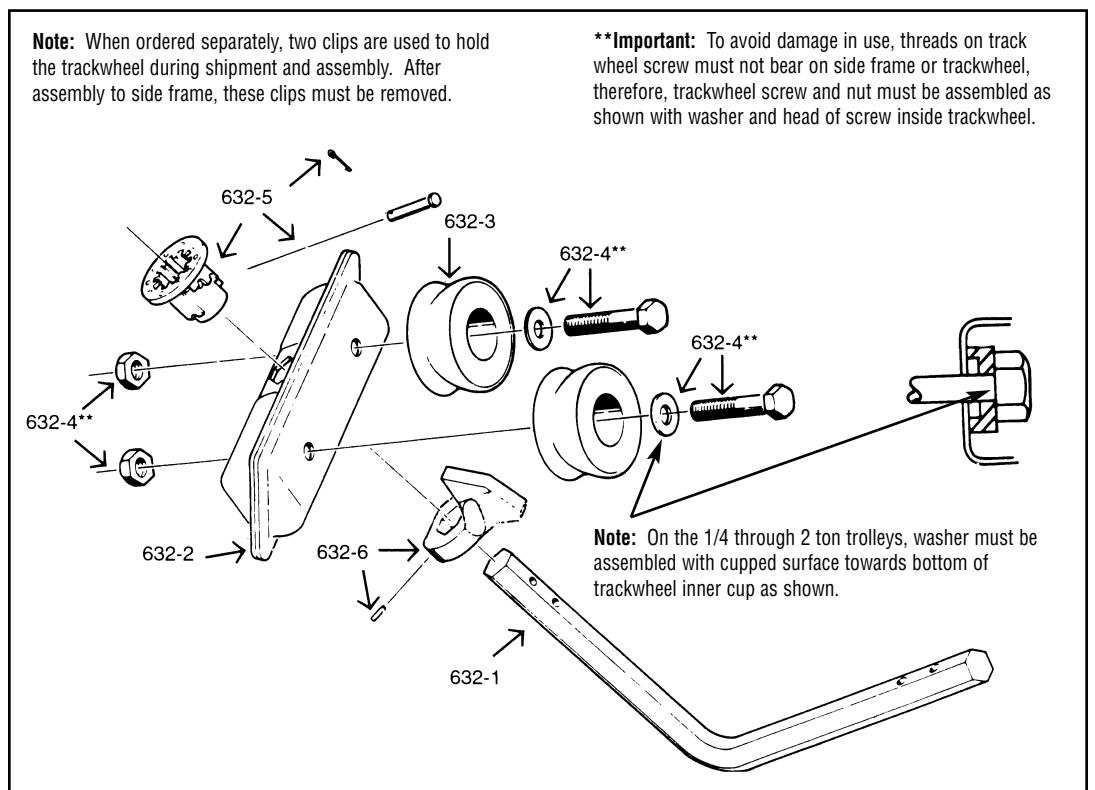
INCHES	5	5-7/32	5-11/32	5-1/2	5-5/8	5-25/32	5-29/32	6-1/16	6-3/16	6-11/32	6-1/2	6-5/8	6-25/32	6-29/32	7-1/16	7-3/16	7-11/32	7-1/2
MM	127	133	138	140	143	147	150	154	157	161	165	168	172	175	179	183	187	191
	← USE LOWER LOAD BAR PIN HOLE →									← USE UPPER LOAD BAR PIN HOLE →								
SIDE #1	A	A	B	B	C	C	D	D	E	A	A	B	B	C	C	D	D	E
SIDE #2	A	B	B	C	C	D	D	E	E	A	B	B	C	C	D	D	E	E

Inspection:

Periodic trolley inspection should be carried out coincident with hoist (or other appliance) inspection. As a minimum, a monthly visual inspection of the load bar and trackwheels should be carried out. The load bar should be

replaced when the observed wear exceeds 15% of the original stock dimension. Wheels should be removed from service when there is any visual indication of fracture at transition of flange and tread sections.

Parts Drawing



Sellstrom Manufacturing Co.
 One Sellstrom Drive
 Palatine, IL 60067
 Phone 800.323.7402
 Fax 847.358.8564
<http://www.fallprotection.com>

9900 Series I-Beam Trolley

Installation, Operating & Maintenance Instructions

Parts List:	Key No.	Part Number	Part Name	No. Req'd
	632-1	32124	Loaed Bar	1
	632-2	32604	Side frame assembly	2
	632-3	32655	Trackwheel assembly	4
	632-4	32658	Trackwheel screw with washer and nut	4
	632-5	32661	Adjusting collar with clevis pin and cotter pin	2
	632-6	3228	Guard with set screw (optional)	1
	632-7	32665	Label kit (all labels for trolley-not shown)	

12.0 Questions

If you have any question or need additional explanation or clarification about the use of any SM/RTC equipment, call SM/RTC customer

service toll-free **800-323-7402** (U.S. and Canada) or **847-358-2000** in Illinois or outside the Continental United States.

Safety Checklist

Warning



Do not use SM/RTC equipment if you answer "no" to any of the questions below!

- ✓ Has all equipment been assembled and installed according to SM/RTC instructions?
- ✓ Has all equipment been inspected and maintained in accordance with SM/RTC instructions?
- ✓ Does the anchorage point meet SM/RTC and OSHA requirements?
- ✓ Is the equipment suited for the intended work task, and is it capable of providing continuous protection?
- ✓ Has each user received training - when hired or within the last 12 months- in the proper and safe operation and use of the equipment?
- ✓ Do all users fully understand the instructions and agree to use the equipment in a safe manner?
- ✓ Has SM/RTC been called if you or any user does not know how to comply with these instructions?

A "no" answer to any of the questions above could lead to a serious or fatal injury to a user or anyone in the vicinity of use. If you have questions, contact SM/RTC at **1(800) 323-7402** (U.S. and Canada) or **1(847) 358-2000** (Illinois and outside the continental United States).